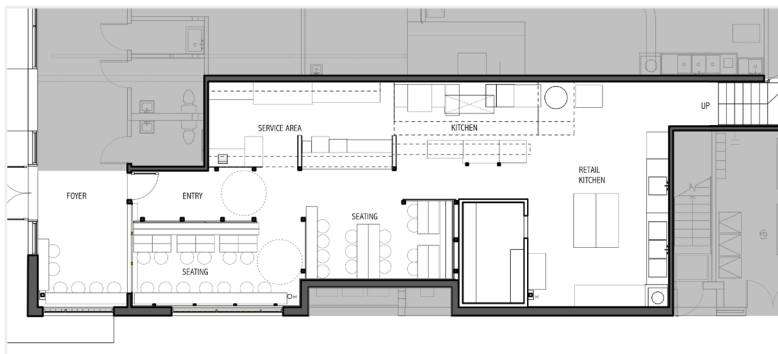


Noranekeo

2015 Portland, Oregon



Noranekeo is a new ramen shop in close-in Southeast Portland. Many of the space's existing industrial qualities were preserved: open web steel trusses, weathered galvanized metal decking and rough concrete floors.

The Japanese styled guest area is interspersed with steel columns off of which we built benches, countertops, and the bar. Also attached to these supports are layers of reclaimed plywood, clear sealed cement board, wood components and mirrors. These serve as subtle room definitions. The lighting scheme includes simple track lighting with LED fixtures and Isamu Noguchi light fixtures.

Building type: Commercial
Project type: Restaurant T.I.
Project scope: Full contract
Client: Biwa Restaurant
Size: 2,250 sq ft
Cost: \$250,000
Completed: 2015

Noraneke

2015 Portland, Oregon



Another major concern, in addition to the design of the dining area, was the functionality of the kitchen and storage mezzanine, which would serve Noraneke and its sister restaurant, Biwa.

Constructive Form worked closely with Heroist on Noraneke's brand design and coordinated the production of the neon sign.