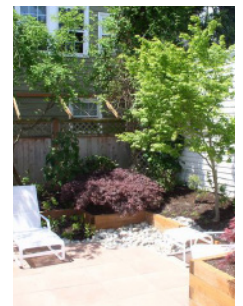
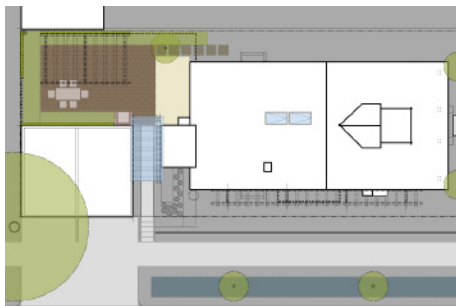
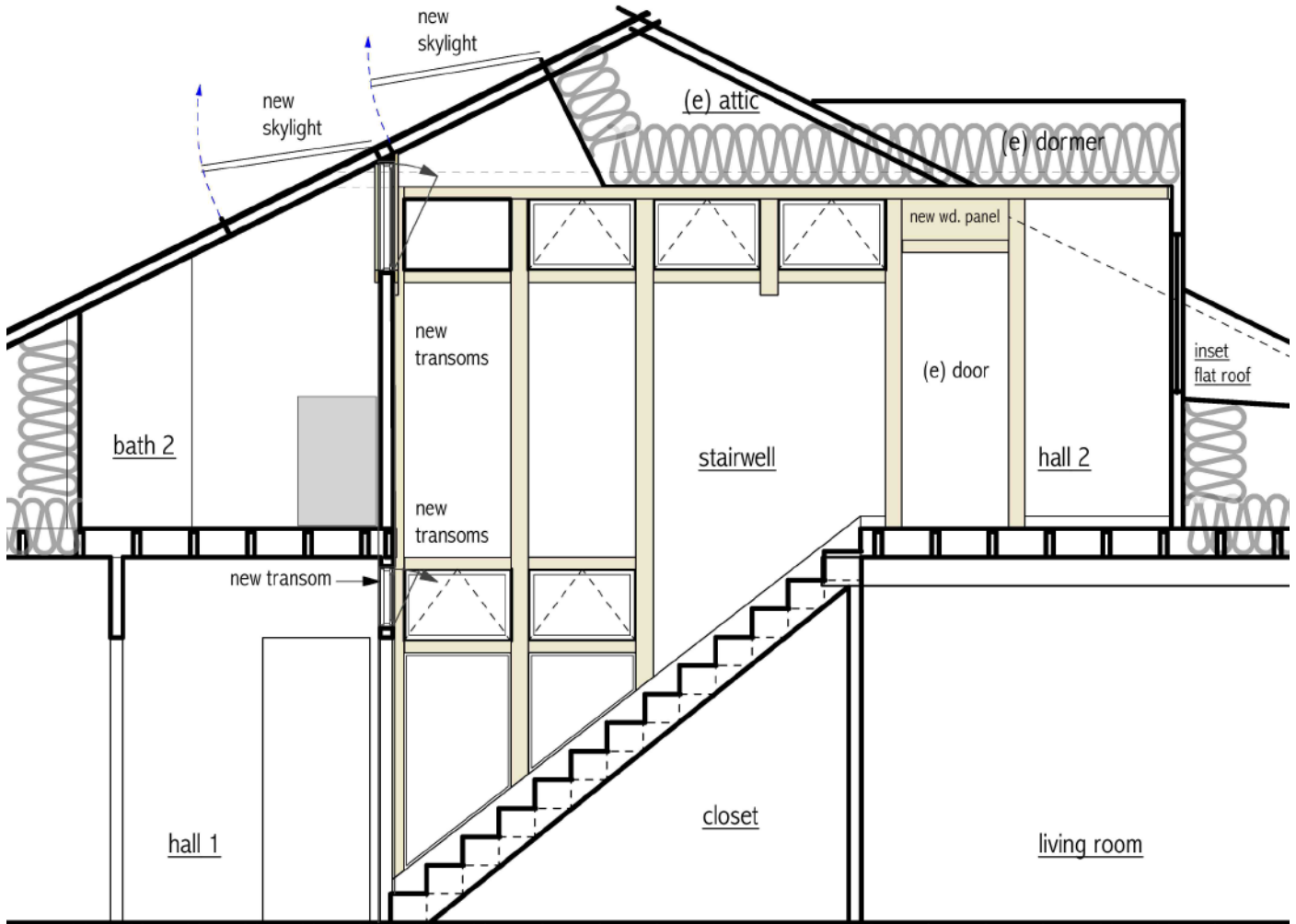


GrandView Residence Renovation

2011 Tacoma, Washington



SITE & PROGRAM

This project involves the incremental renovation of a 1917-era house in an established neighborhood. The house has a long gable section with very good solar exposure on a corner lot.

The first part of the design work focused on increasing daylight access to areas in the middle section of the house, and included strategies for summertime ventilation. The basis for design decisions also included energy efficiency and insulation levels, and options for radiant heating and solar gain. Exterior insulation under new siding is also being installed.

Building Type: Private House

Project Type: Renovation

Project Scope: Schematic Design - Construction Documents

Client: Private

Schedule: Completed 2011

Constructive Form
Architecture and Design LLC

www.constructiveform.com

