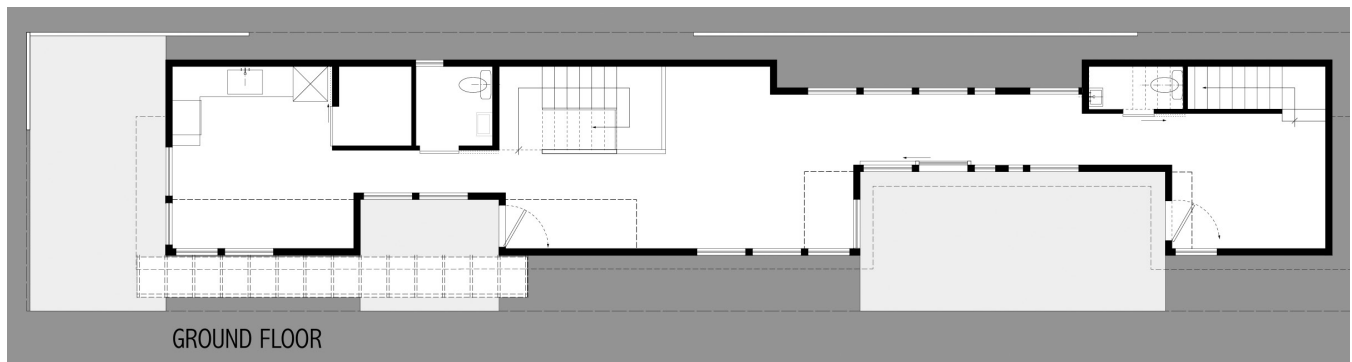
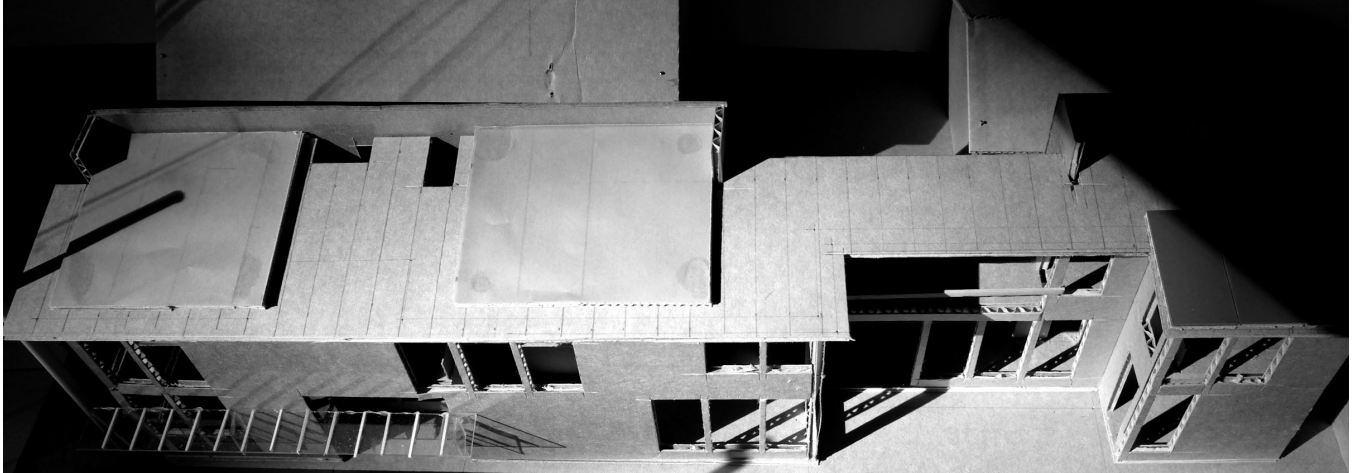


# Lincoln Park Annex Residence

2007 Portland, Oregon



## SITE & PROGRAM

The house on this narrow urban lot in Northeast Portland is formed around a compact exterior court. The building is two floors in height and parallels the south lot line.

The basis of this project was a development of concepts from our participation in the 'Big Ideas for Small Lots Competition' sponsored by the City of Portland. The construction system is designed to allow for incremental phasing: a potential addition, a green roof, and the future installation of solar panels.

Building Type: Private House  
Project Type: New Construction  
Project Scope: Concept Design  
Client: Private  
Size: Lower Level: 960 SF  
Upper Level: 624 SF  
Schedule: Unbuilt

