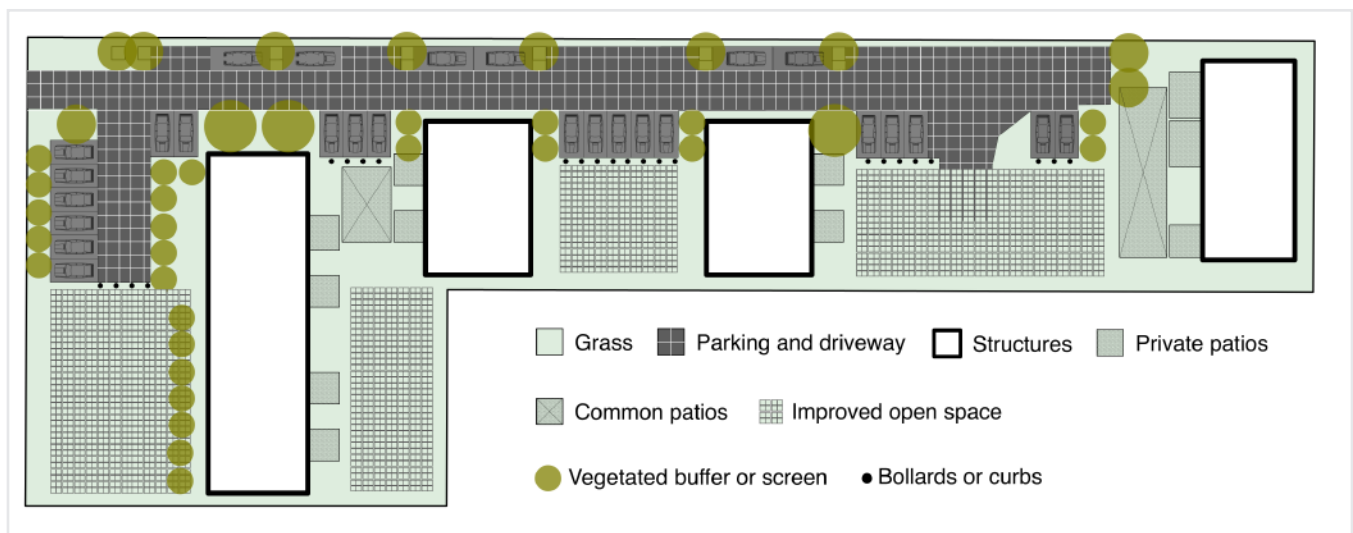
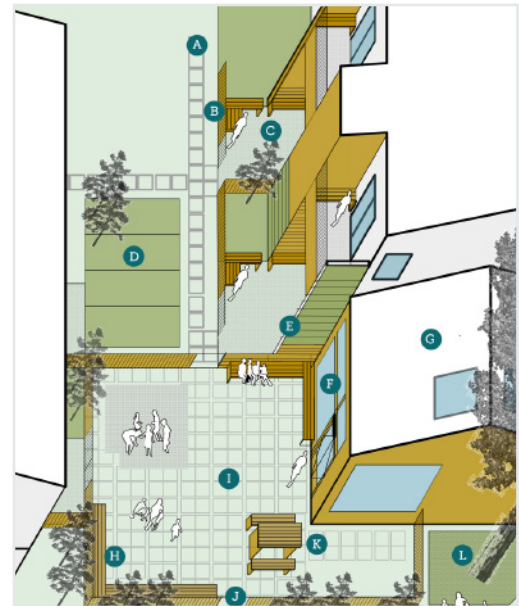
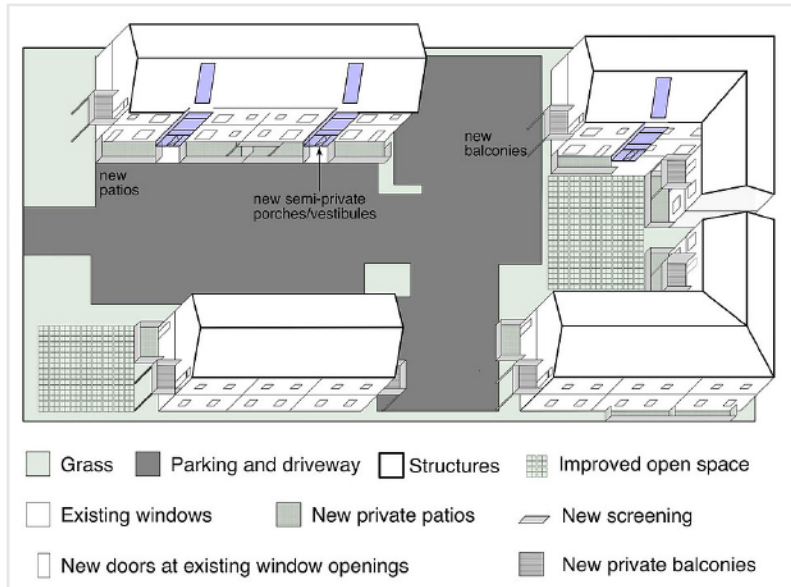


Promoting Health Through Multi-Family Housing Planning Study

2013 Portland, Oregon



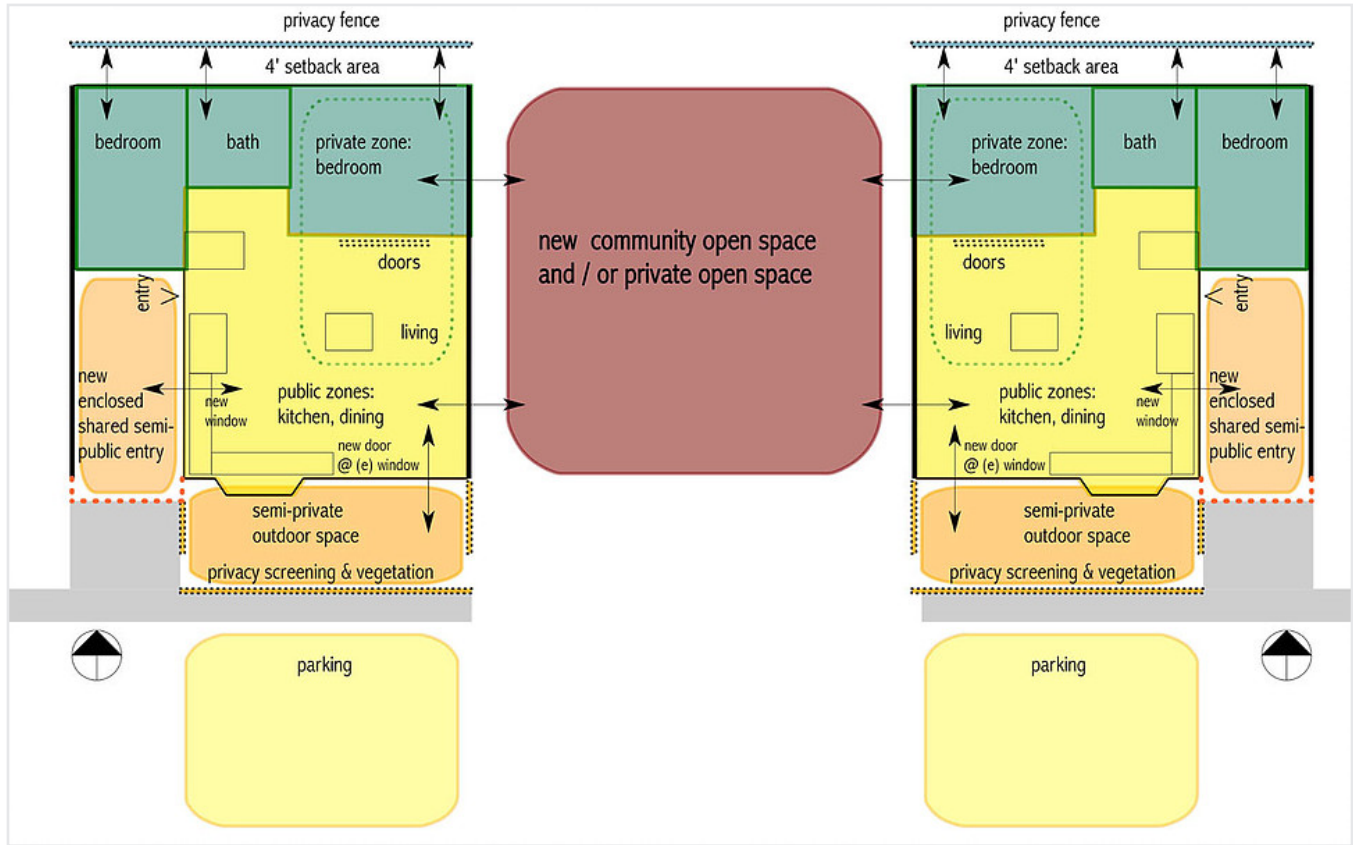
Constructive Form was engaged as a design consultant by the City of Portland Bureau of Planning and Sustainability (BOPS) to help develop a Best Practices Handbook for promoting the health and welfare of residents in existing and future multi-family housing projects, with an emphasis on existing apartment complexes in East Portland.

Together with our partners, we visited several East Portland apartment complexes and conducted an existing site and building typology assessment. Our visits gave us the insight needed to develop a set of improved site and building design recommendations.

Building type: Multi-Family Housing
 Project type: Planning
 Project scope: Conceptual Feasibility Study
 Client: City of Portland
 Size: N/A
 Cost: Private
 Schedule: 2013

Promoting Health Through Multi-Family Housing Planning Study

2013 Portland, Oregon



We also compiled a series of strategies, policies and code recommendations for meeting the project’s health and equity goals. Finally, we provided the 3-D models, sketches, photos, urban design diagrams and illustrations featured throughout the Handbook.

We also had the opportunity to present some of our findings and illustrations to a community youth workshop, which was a highlight of this project.